



KITH & KIN INTERNATIONAL COLLEGE

7/11 Kaoli Olusanya Street, Owode Ibeshe, Ikorodu, Lagos State.

FIRST TERM EXAMINATION 2025/2026 ACADEMIC SESSION

NAME					
SUBJECT	NATIONAL VALUE EDUCATION	CLASS	J S 2	DURATION	1 HR

INSTRUCTION: ANSWER ALL QUESTION IN THIS SECTION [20 marks]

PART A: OBJECTIVE

Civic JSS 2

1. Integrity means _____.

- A. cheating in examination
- B. being honest and truthful
- C. disobeying elders
- D. telling lies

2. A person of integrity is always _____.

- A. dishonest
- B. greedy
- C. trustworthy
- D. disrespectful

3. Which of the following is an example of integrity?

- A. Returning a lost wallet you found
- B. Taking what does not belong to you
- C. Refusing to obey traffic rules
- D. Cheating in an exam

4. People of integrity are needed in the society because they _____.

- A. promote corruption
- B. build trust and peace
- C. increase crime
- D. deceive others

5. One reason why society needs people of integrity is to_____.

- A. promote lies
- B. encourage corruption
- C. ensure justice
- D. weaken trust

6. One example of courage is _____.

- A. speaking the truth despite threats
- B. refusing to help others
- C. cheating in an exam
- D. running away in fear

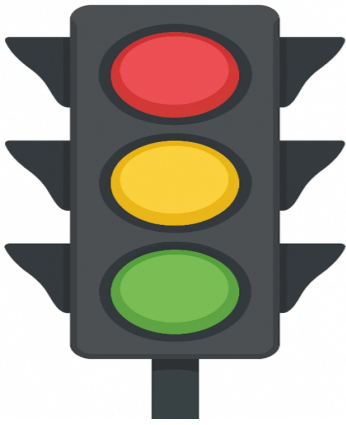
7. Who among the following is courageous?

- A. A student cheating in an exam
- B. A soldier defending the country
- C. A corrupt policeman
- D. A thief



8. The above picture represents a person who shows _____.

- A. courage
- B. indiscipline
- C. dishonesty
- D. fear



9. The above picture is used to promote _____.

- A. disrespect for rules
- B. law and order in traffic
- C. accidents
- D. corruption

10. Contentment means_____.

- A. being satisfied with what you have
- B. wanting what others have
- C. stealing to meet your needs
- D. disobeying elders

11. Nigeria became a federation in _____.

- A. 1914
- B. 1960
- C. 1963
- D. 1999

12. In a federation, power is shared between _____.

- A. teachers and students
- B. federal and state
- C. parents and children
- D. traditional rulers only

13. Good citizens are expected to _____.

- A. obey laws

B. disobey rules

C. cheat and low

D. promote corruption

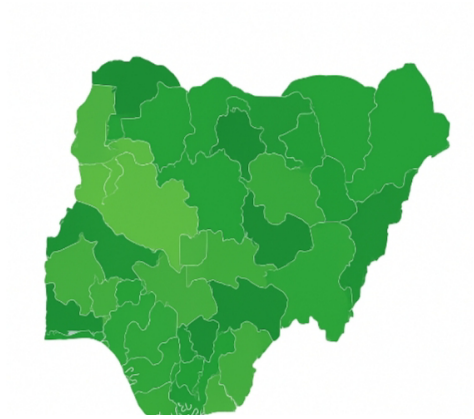
14. Which of the following is the best way to build a better society?

A. practicing national values

B. disobeying laws

C. encouraging indiscipline

D. promoting corruption



15. The above picture represents Nigeria as a _____.

A. monarchy

B. federation

C. dictatorship

D. unitary state

16. Discipline means _____.

A. doing what ever you like

B. obeying rules and regulations

C. being lawless

D. fighting others

17. A discipline student will _____.

A. cheat in exams

B. come to school late

C. respect school rules

D. disobey teachers

18. Which of the following is a sign of **indiscipline**?

A. Honesty

B. Fighting in the classroom

C. Respect

D. Obedience

19. Which of these leaders is remembered for integrity?

A. A corrupt politician

B. A dishonest trader

C. A judge who upholds justice

D. A thief

20. A society without people of integrity will experience _____.

A. peace and justice

B. corruption and disorder

C. growth and development

D. honesty

21. Which of the following is a national value?

A. Corruption

B. Discipline

C. Dishonesty

D. Indiscipline

22. A society develops when its citizens show _____.

A. courage

B. corruption and dishonesty

C. greed and fear

D. indiscipline and lies

23. A discipline person is usually _____.

A. careless

B. respectful and hardworking

C. corrupt

D. lazy



24. The above picture shows an act of _____.

A. integrity and agreement

B. cheating

C. corruption

D. dishonesty

25. Respecting traffic rules prevents_____.

A. accidents

B. safety

C. peace

D. unity

SOCIAL STUDIES



26. The diagram above is an example of ____

A. harmful traditional practices

B. good child upbringing

C. child discipline

D. child molestation

27. One of the needs for people of integrity in Nigeria is for -----

- A. peaceful co- existence
- B. corruption
- C. dishonesty behavior
- D. cheating

28. Social studies belongs to which area of study?

- A. science
- B. arts
- C. physical Science
- D. social Science

29. All these are consequences of drug trafficking except

- A. death
- B. life imprisonment
- C. appreciation
- D. property may be confiscated by the appropriate authority

30. Which traditional practice is not harmful to the community?

- A. early marriage
- B. female genital mutilation
- C. prohibition of some food items during pregnancy
- D. none of the above

31. Which of the following is not an agent of socialization?

- A. religious institution
- B. newspaper
- C. family
- D. police

32. All these are advantages of living together in the family except

- A. happiness
- B. protection
- C. good social behavior
- D. bad social behavior

33. All these are benefits of group behavior except

- A. it promotes the spirit of team
- B. it promotes economic stability.
- C. it promotes conflict in the society
- D. it is a way of socializing the younger ones.

34. The customs , beliefs and way of life of the people which are capable of causing physical or psychological pain to people is called ____

- A. civilization
- B. socialization
- C. harmful traditional practices



35. The demonstration above is ____

- A. peaceful demonstration
- B. gangsterism
- C. mass action
- D. Communalism

36. ____ is the situation or period of time in which there is no war

- A. cooperation
- B. peace
- C. conflict
- D. agreement

37. A child can be abused -----

- A. physically
- B. sexually
- C. psychologically
- D. all of the above

38. Effect of drug abuse on an individual is felt in the area of -----

- A. education
- B. family life
- C. health
- D. all of the above

39. Which of these is harmful?

- A. blood tonic
- B. paracetamol
- C. heroine
- D. none of the above

40. ----- occurs when an intentional injury is inflicted on a child

- A. child neglect
- B. child abuse
- C. tough love
- D. discipline

41. ----- means working together for common purposes

- A. confidence
- B. cooperation
- C. culture
- D. commitment

42 Groups are necessary for the following reasons

- A. task performance
- B. co-operation
- C. achievement of set goals
- D. all of the above



43. The diagram above is as a result of ____

- A. pampering
- B. child discipline
- C. child abuse
- D. masturbation

44. All of these EXCEPT one are examples of harmful traditional practice.

- A. child love
- B. tribal mark
- C. female genital mutilation
- D. child marriage

45. All these are types of group behavior EXCEPT

- A. peaceful demonstration
- B. communal effort
- C. discussion
- D. mass action

46. One of the advantages of living together include the following EXCEPT

- A. peaceful co-existence
- B. survival and security
- C. love and companionship
- D. for liability and dependence

47. All are objectives of social studies except

- A. teaches value
- B. helps us to understand our social environment
- C. helps to understand culture
- D. teaches us to abuse

48. Drug abusers often bring ----- to their families

- A. respect
- B. money
- C. shame
- D. happiness

49. One can discover one's talent through

- A. stealing
- B. reading
- C. playing

D. sleeping

50. The first source of value is -----

A. community

B. home

C. school

D. religion

Security education

Instruction: All all the questions in this section

51. According to the image bellow which of these is an example of a common crime?



A. reading in the library

B. picking someone's pocket

C. singing in the choir

D. writing an exam

52. What do we call an act that breaks the law?

A. duty

B. rule

C. crime

D. service

53. Which of the following is **NOT** a common crime?

A. stealing

- B. robbery
- C. lying to a friend
- D. attending school

54. Which agency handles criminal matters in Nigeria?

- A. FRSC
- B. WAEC
- C. Police
- D. INEC

55. The law is made to:

- A. cause fear
- B. encourage crime
- C. punish children
- D. protect the people

56. Which of these crimes can affect the environment?

- A. sweeping the floor
- B. deforestation
- C. fetching water
- D. planting trees

57. All these are the roles of the Nigerian police except _____

- A. maintaining law and order
- B. detecting crimes
- C. making law
- D. arresting the offender

58. All these are ways of responding to common crime in the environment except _____

- A. remain calm

B. gets the basic information

C. record your observation

D. Shooting gun

59. According to the image bellow which crime can lead to flooding in the environment?



A. robbery

B. drug abuse

C. blocking drainage

D. overeating

60. An example of cybercrime in the environment is:

A. street fighting

B. internet fraud

C. flooding

D. cultism

61. Burning refuse openly causes:

A. clean air

B. air pollution

C. fresh smell

D. rainfall

62. Bullying a student in school is:

A. discipline

B. a good act

C. a crime

D. helping

63. Fire disaster requires the quick intervention of _____

A. Nigeria army

B. police

C. Nigerian custom

D. fire fighter

64. Which of these helps prevent crime in school?

A. hiding problems

B. breaking lockers

C. setting rules

D. ignoring theft

65. A student who fails to complete school or college course is called _____

A. a graduant

B. a celebrant

C. child abuse

D. a school dropout

66. Which of these actions encourages peace in school?

A. fighting

B. obeying rules

C. cultism

D. cheating

67. According to the picture which is a sign of good safety behaviour?



- A. running in corridors
- B. leaving wires open
- C. using zebra crossing
- D. ignoring fire drills

68. According to this image the first thing to consider at the scene of a crime is your_____



- A. parent
- B. safety
- C. family
- D. teacher

69. Safety in school is everyone's:

- A. problem
- B. fight only
- C. business
- D. duty of teachers only

70. Which of the following is unsafe behaviour?

- A. keeping emergency numbers
- B. fighting with sharp objects
- C. reporting danger
- D. following safety signs

71. Why should fire extinguishers be in schools?

- A. for decoration
- B. to fight fires
- C. to play with
- D. to punish students

72. According to this image wearing helmets while riding bikes is:



- A. Optional
- B. Unnecessary
- C. A safety measure
- D. A punishment

73. Who should be informed first when a crime is witnessed in the society?

- A. a friend
- B. the police
- C. neighbors
- D. strangers

D. lawyer

74. The emergency number to call the police in Nigeria is:

A. 101

B. 199

C. 112

D. 123

75. Students can report crime without danger by:

A. fighting the suspect

B. secretly informing teachers/authority

C. posting on social media

D. following criminals

THEORY (40 MARKS)

SECTION B SOCIAL STUDIES

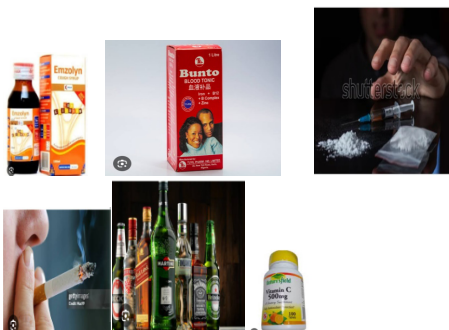
Instruction: Answer ONLY Two QUESTIONS from this section, each question carries equal marks.

(a) classify the diagram below into licit & illicit drug

3marks

(b) List four measures to control and stop harmful traditional practices 3marks

(b) State four importance of peace in our society 4marks



(a) Define the following 4marks

Drug

ii. Harmful traditional practice

Drug Trafficking

Group behaviour

2b. Mention four examples of harmful traditional practices 2marks

(b.) Mention four characteristics of constructive group behavior 4marks

3.(a)What is social studies ? 2 marks

(b.) State four importance of social studies 4 marks

(c.) State four reasons for trafficking in drugs 4 marks

SECTION B (CIVIC EDUCATION)

Theory

Answer only one question in all

1a. List four attributes of integrity. 2. marks

1 b. Identify five attributes of a courageous person. 5 marks

1 c. State three characteristics of federation. 3 marks

2 a. Explain four attributes of contentment. 4 marks

2 b. State four reasons why people of integrity are needed in the society.

4 marks

2 c. Explain discipline.

1 mark

Security Education

Theory

Instruction: Answer only one(1) questions in all.

1a. Explain common crime 2marks

b. Mention six examples of common crime 3marks

c Mention five causes of common crime in school 5marks

2ai. Describe safety consciousness 2marks

ii. Define a crime scene. 2marks

b. Mention six governmental agents that crimes could be reported to in Nigeria. 3marks

c. Explain two roles of any two agents mentioned above 3marks